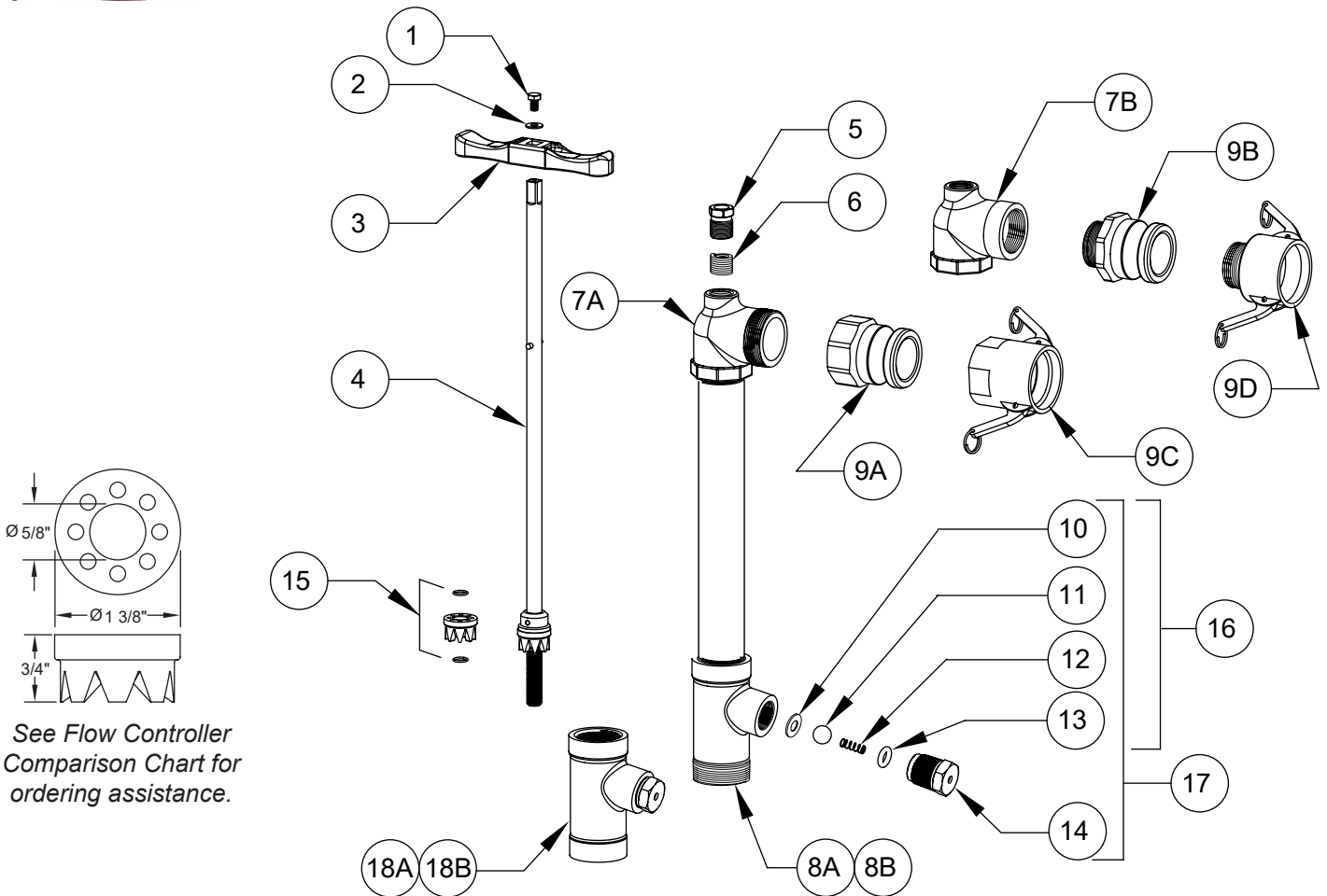




# MODEL R150LP 1 1/2" Low Pressure Hydrant



See Flow Controller Comparison Chart for ordering assistance.

ITEM NO.	PART NUMBER	DESCRIPTION	QTY
1	61039	Handle Bolt	1
2	61040	Handle Washer	1
3	61024	Handle	1
4	6510X	1 1/2" LP Rod Assembly	1
5	61035	Packing Nut	1
6	61086	Teflon Packing	1
7A	61011	1.5 Elbow Casting with 2.0 M Outlet	1
7B	61012	1.5 Elbow Casting with 1.5 F Outlet	1
8A	61007	1.5 LP Valve Body with 2.0 M Inlet	1
8B	61005	1.5 LP Valve Body with 1.5 F Inlet	1
9A	61057	2.0 Male - Type A - Adapter - AL - 400 PSI	1
9B	61054	1.5 Male - Type F - Adapter - AL - 400 PSI	1

ITEM NO.	PART NUMBER	DESCRIPTION	QTY
9C	61068	2.0 Female - Type D - Coupling - AL - 400 PSI	1
9D	61065	2.0 Female - Type B - Coupling - AL - 400 PSI	1
10	61034	Brass Washer	1
11	61032	SS Drain Ball	1
12	61029	Drain Spring	1
13	61028	Drain O-Ring	1
14	61027	Drain Body	1
15	61042	1.5 LP Flow Controller (15L) w/(2) 61052 O-Rings	1
16	65011	Drain Repair Kit	1
17	65013	Drain Repair Kit w/Body	1
18A	65006	1.5 LP Valve Body w/2.0 M w/Drain Ass'y.	1
18B	65004	1.5 LP Valve Body w/1.5 F w/Drain Ass'y	1

For more information contact...

## Roger's Hydrant Company, LLC.

2121 Waynoka Road, Colorado Springs, Colorado 80915 • Phone: (877) 454-8097

email: [sales@rogershydrants.com](mailto:sales@rogershydrants.com)